



Microwave Motion Sensor S-10DOORADM

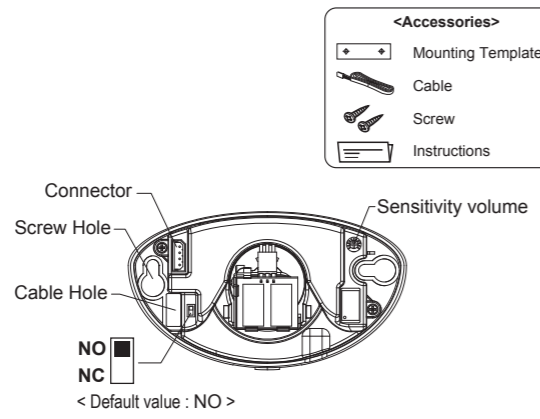
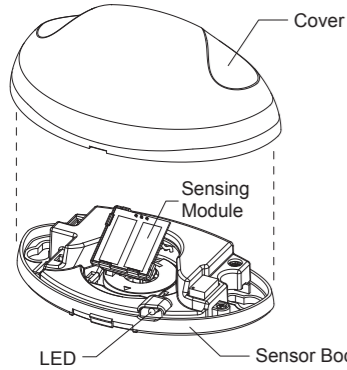
Instruction Manual

The S-10DOORADM is a high performance motion detection sensor specifically designed for the activation of automatic doors. For the safe and accurate use of this product, please read this instruction manual carefully.

1 Technical specifications

Power Supply : DC 12~30V, AC 12~24V	Current Consumption : < 1.4W
Product Size : 120mm □ 70mm □ 41.5mm (W □ L □ H)	Contact Capacity : 0.5A/125VAC, 1A/24VDC
Microwave Module : 24.125GHz	Max Install Height : 4.0m
Hold Time : 1.2 Sec.	Operating Temp/Humidity : -20°C~+60°C/0~90%
Detecting Field : 4m □ 3m (W □ D) (Height 2.2m)	International Protection : IP54

2 General Information

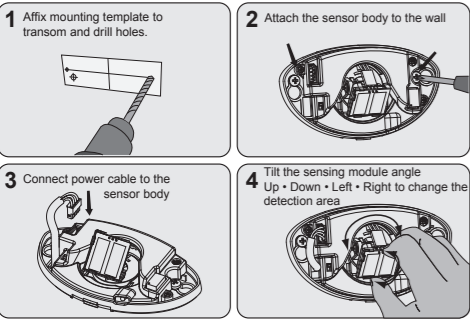


- <Accessories>**
- Mounting Template
 - Cable
 - Screw
 - Instructions

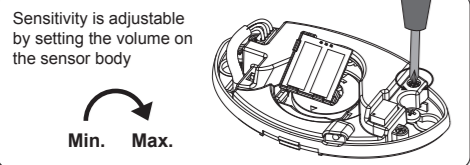
NO
NC
< Default value : NO >

3 Installation Guide

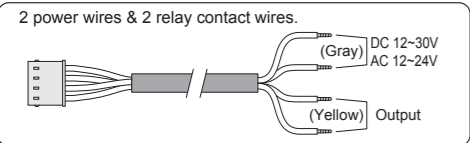
Do not supply power during installation. Do not disassemble or modify the device, it may cause fire or electric shock



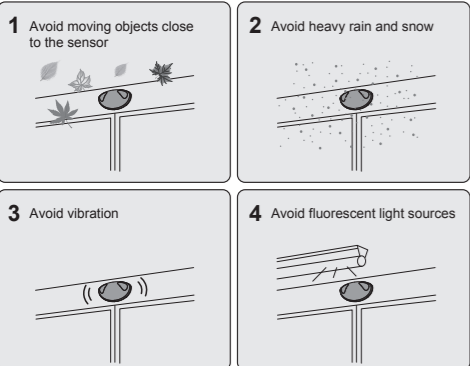
4 Sensitivity Adjustment



5 Wiring Diagram

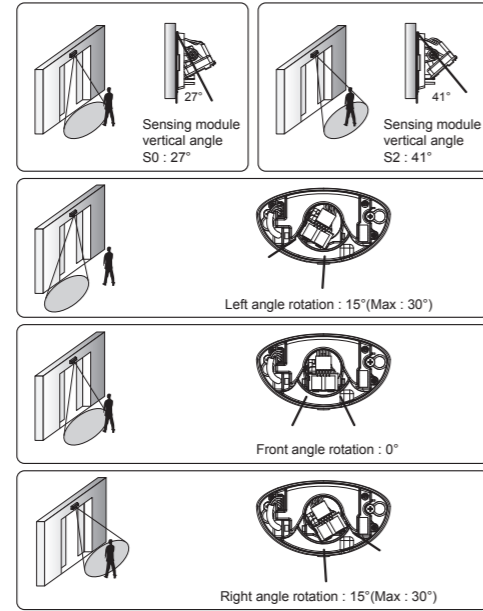


6 Mounting Information

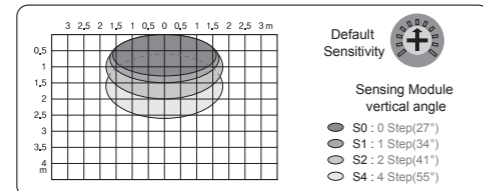


7 Detection Area Position Adjustment

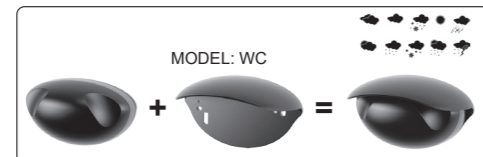
Adjust the Sensing module up and down to achieve a detection area close to or far from the door. Adjust the Sensing module to the right and left to achieve the desired side approach detection area.



8 Detection Field (Mounting Height : 2.2m)



9 Weather Cover (Sold Separately)



NOTE The specifications of this product can be changed without prior notice



Sensore di movimento microonde S-10DOORADM

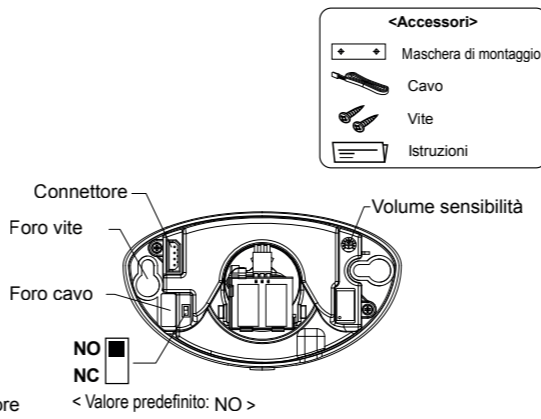
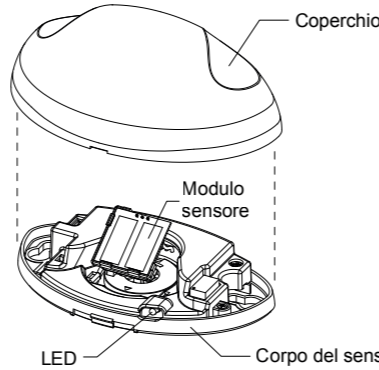
Manuale di istruzioni

S-10DOORADM è un sensore di rilevamento di movimento ad elevate prestazioni progettato specificamente per l'attivazione Delle porte automatiche. Per un uso sicuro e corretto del prodotto, si prega di leggere attentamente il presente manuale di istruzioni.

1 Specifiche tecniche

Alimentazione elettrica: 12~30 V CC, 12~24 V CA	Consumo di potenza: < 1,4 W
Dimensioni del prodotto: 120 mm x 70 mm x 41,5 mm	Capacità di contatto: 0,5 A/125 V CA, 1 A/24 V CC
(Larg. x Lung. x Alt.)	Altezza di installazione max.: 4,0 m
Modulo microonde: 24,125 GHz	Temperatura/umidità di esercizio: -20°C~+60°C/0~90%
Tempo di mantenimento: 1,2 sec.	Protezione internazionale: IP54
Campo di rilevamento: 4 m x 3 m (Larg. x Prof.) (Altezza 2,2 m)	

2 Informazioni generali

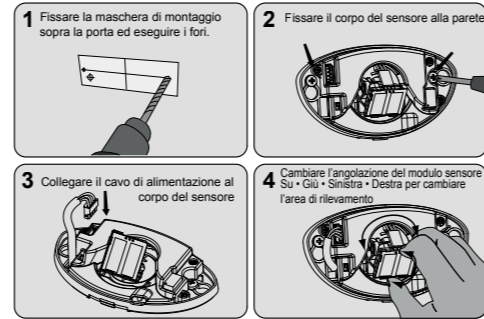


- <Accessori>**
- Maschera di montaggio
 - Cavo
 - Vite
 - Istruzioni

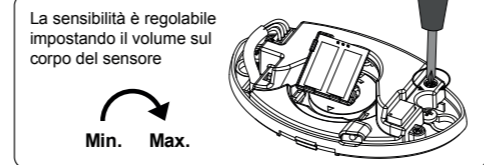
NO
NC
< Valore predefinito: NO >

3 Guida all'installazione

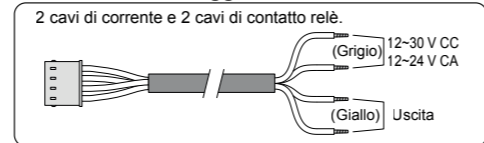
Non collegare all'alimentazione elettrica durante l'installazione. Non smontare o modificare il dispositivo, potrebbe causare incendi o scariche elettriche



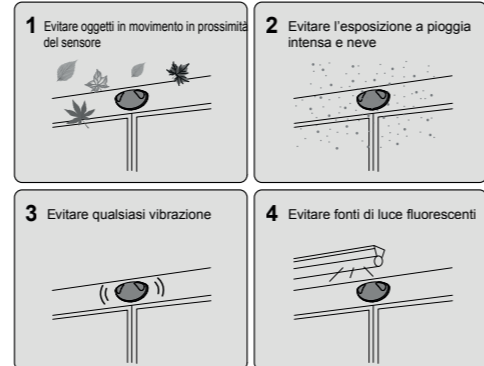
4 Regolazione della sensibilità



5 Schema di cablaggio



6 Informazioni di montaggio



Sensor de movimiento por microondas S-10DOORADM

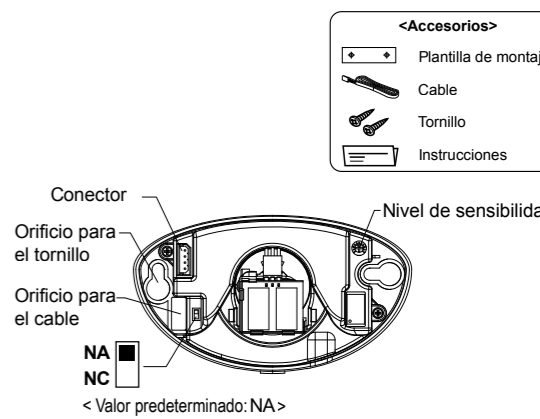
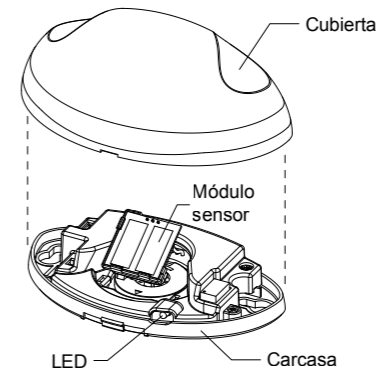
Manual de instrucciones

El S-10DOORADM es un sensor de detección de movimiento de alto rendimiento diseñado específicamente para la activación de puertas automáticas. Lea detenidamente este manual de instrucciones para utilizar el producto de manera correcta y segura.

1 Especificaciones técnicas

Alimentación eléctrica: 12~30V CC, 12~24V CA	Consumo de energía: < 1,4 W
Dimensiones del producto: 120 mm x 70 mm x 41,5 mm	Capacidad de contacto: 0,5 A/125 V CA, 1 A/24 V CC
(Ancho x Largo x Alto)	Alteza máxima de instalación: 4,0 m
Módulo microondas: 24,125 GHz	Temperatura/Humedad de funcionamiento: -20°C~+60°C/0~90%
Tiempo de espera: 1,2 s	Grado de protección: IP54
Campo de detección: 4 m x 3 m (Ancho x Distancia) (Alteza 2,2 m)	

2 Información general

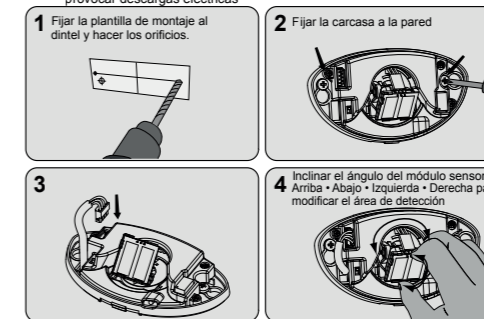


- <Accesorios>**
- Plantilla de montaje
 - Cable
 - Tornillo
 - Instrucciones

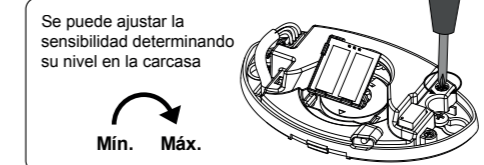
NA
NC
< Valor predeterminado: NA >

3 Guía de instalación

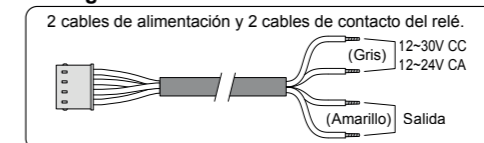
Desconecte el suministro eléctrico durante la instalación. No desmonte ni modifique el dispositivo, ya que podría incendiarse o provocar descargas eléctricas



4 Ajuste de sensibilidad



5 Diagrama de cableado

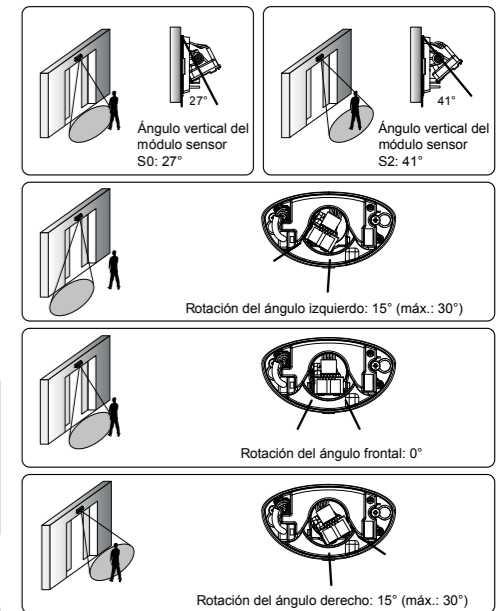


6 Información de montaje

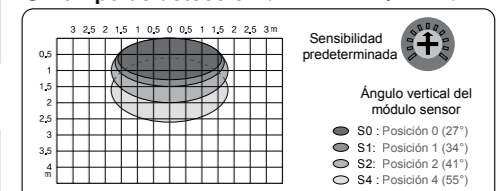


7 Ajuste de la posición del área de detección

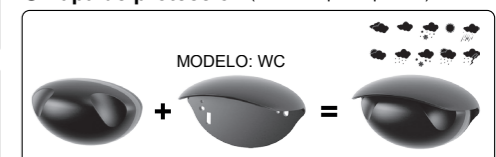
Ajuste el módulo sensor hacia arriba y hacia abajo para situar el área de detección cerca o lejos de la puerta. Ajuste el módulo sensor hacia la izquierda y la derecha para ubicar el área de detección en el lateral deseado.



8 Campo de detección (altura de montaje: 2,2 m)



9 Tapa de protección (se vende por separado)



NOTE Las especificaciones de este producto pueden sufrir modificaciones sin previo aviso



Détecteur de Mouvement Haute Fréquence S-10DOORADM

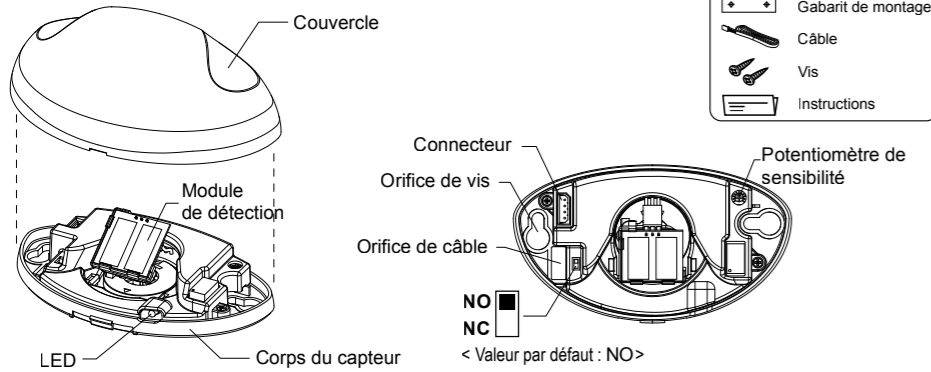
Manuel d'utilisation

Le S-10DOORADM est un détecteur de mouvement haute performance spécifiquement conçu pour l'activation des portes automatiques. Pour que ce produit fonctionne de façon sûre et correcte, veuillez lire ce manuel d'utilisation attentivement.

1 Spécifications techniques

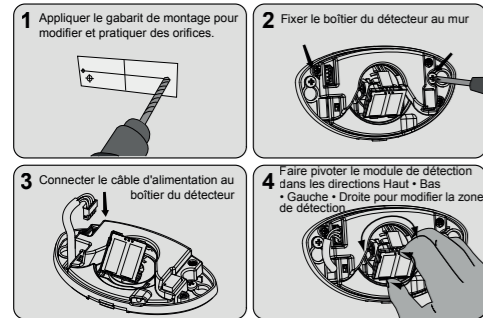
Alimentation électrique : CC 12~30V, CA 12~24V	Consommation électrique : < 1,4W
Dimensions du produit : 120mm x 70mm x 41,5mm (Longueur x Largeur x Hauteur)	Puissance contact : 0,5A / 125VCA, 1A / 24VCC
Module haute fréquence : 24.125GHz	Hauteur maximale d'installation : 4,0 m
Délai d'attente : 1,2 Sec.	Température / Humidité : -20°C~+60°C / 0~90%
Champ de détection : 4 m x 3 m (La x P) (Hauteur 2,2 m)	Protection internationale : IP54

2 Informations générales



3 Guide d'installation

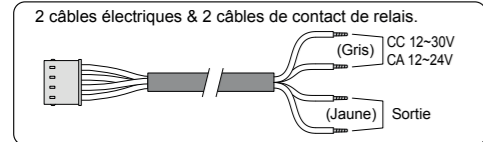
L'alimentation doit être éteinte durant l'installation. Ne pas démonter ou modifier l'appareil, cela peut entraîner un feu ou un choc électrique.



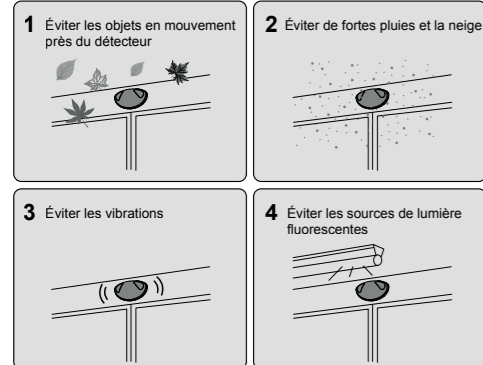
4 Réglage de la sensibilité



5 Schéma de câblage

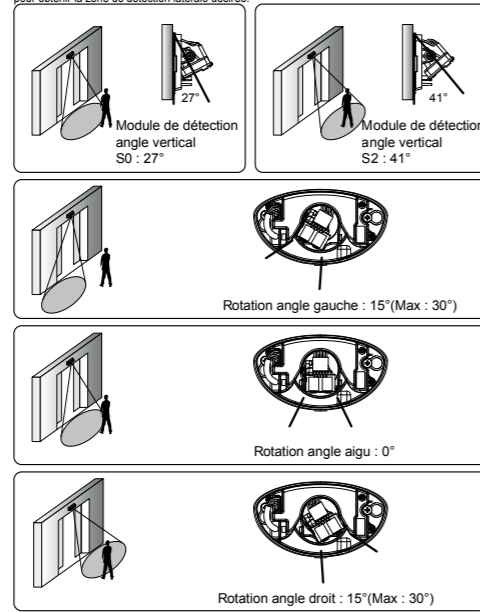


6 Informations de montage

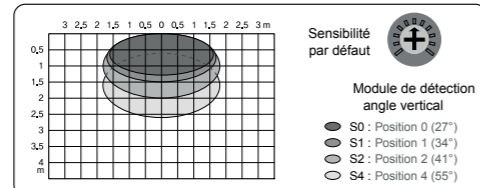


7 Ajustement de la position de la zone de détection

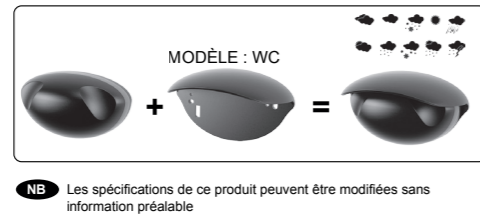
Ajuster le module de détection vers le haut ou vers le bas pour déterminer la proximité de la zone de détection par rapport à la porte. Ajuster le module de détection vers la gauche ou vers la droite pour obtenir la zone de détection latérale désirée.



8 Champ de détection (Hauteur de montage : 2,2 m)



9 Protection contre les intempéries (Vendue séparément)



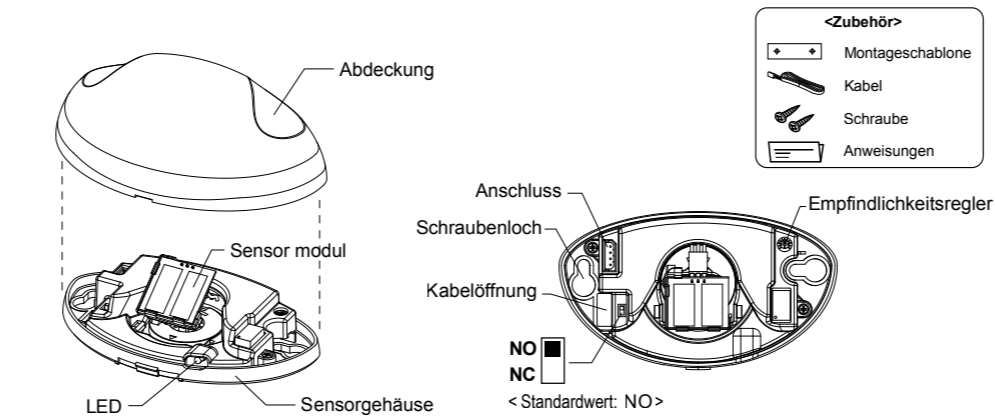
Mikrowellen-Bewegungssensor S-10DOORADM

Betriebsanleitung

Der S-10DOORADM ist ein leistungsstarker Bewegungssensor, der speziell für die Aktivierung von Automatiktüren entworfen wurde. Lesen Sie bitte sorgfältig diese Betriebsanleitung, um einen sicheren und korrekten Gebrauch des Produktes zu gewährleisten.

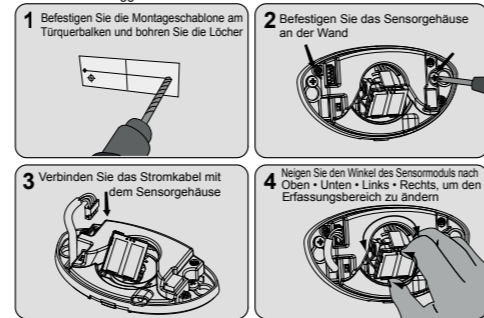
1 Technische Daten

Stromversorgung : DC 12~30 V, AC 12~24 V	Leistungsaufnahme : < 1,4 W
Produktabmessungen : 120 mm x 70 mm x 41,5 mm (L x B x H)	Kontaktkapazität : 0,5A/125 V AC, 1A/24 V DC
Mikrowellenmodul : 24,125 GHz	Max. Einbauhöhe : 4,0 m
Haltezeit : 1,2 Sek.	Temp./Feuchtigk. Betrieb : -20°C~+60°C/0~90%
Erfassungsbereich : 4 m x 3 m (B x T) (Höhe 2,2 m)	Schutzklasse : IP54



3 Installationsanleitung

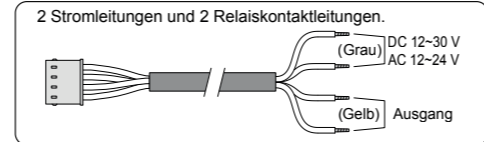
Das Gerät darf nicht verändert oder zerlegt werden. Stromschlaggefahr besteht.



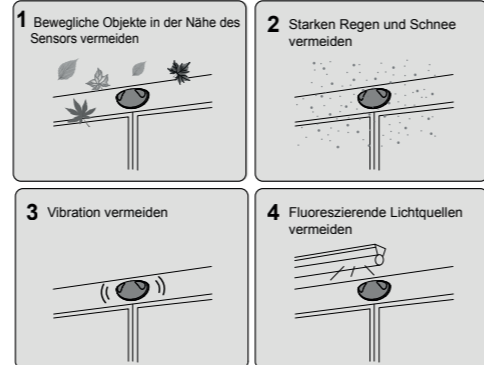
4 Empfindlichkeitseinstellung



5 Anschlussplan

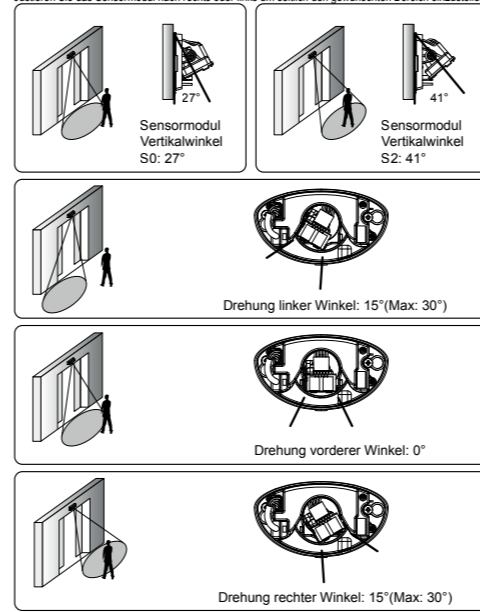


6 Informationen zur Montage

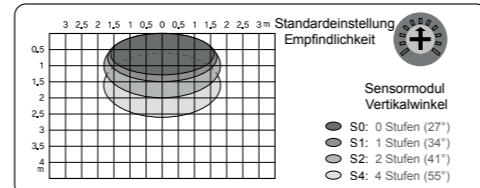


7 Einstellung des Erfassungsbereichs

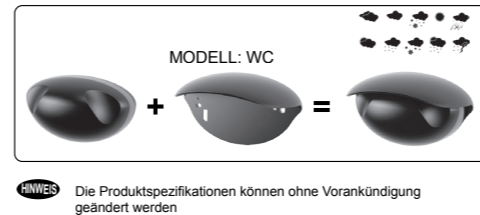
Justieren Sie das Sensormodul nach oben oder unten, um einen Erfassungsbereich nahe oder fern von der Tür zu bekommen. Justieren Sie das Sensormodul nach rechts oder links um seitlich den gewünschten Bereich einzustellen.



8 Erfassungsbereich (Montagehöhe : 2,2 m)



9 Wetterschutz (Separat erhältlich)



Mikrodalga Hareket Sensörü S-10DOORADM

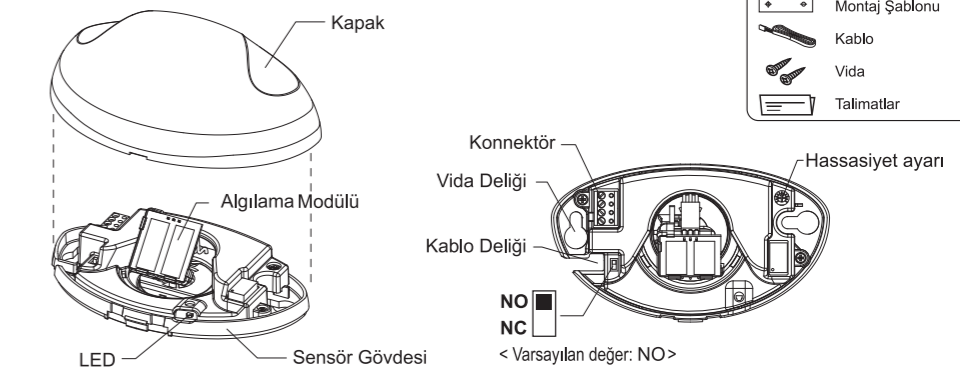
Kullanma Kılavuzu

S-10DOORADM otomatik kapıların aktivasyonu için özel olarak tasarlanmış yüksek performanslı hareket algılama sensörüdür. Ürünün güvenli ve doğru kullanımını için lütfen bu kullanma kılavuzunu dikkatli bir şekilde okuyunuz.

1 Teknik özellikler

Güç Kaynağı : DC 12~30V, AC 12~24V	Güç tüketimi : < 1.4W
Ürün Ebadı : 120mm x 70mm x 41,5mm (G x B x Y)	Kontak Kapasitesi : 0,5A/125VAC, 1A/24VDC
Mikrodalga Modülü : 24.125GHz	Maks. Kurulum Yüksekliği : 4,0m
Tutma Süresi : 1.2 Sn.	Çalışma Sıcaklığı/Nem : -20°C~+60°C/0~90%
Tespit Alanı : 4m x 3m (G x D) (Yükseklik 2,2m)	Uluslararası Koruma : IP54

2 Genel Bilgiler

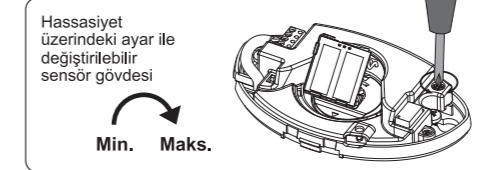


3 Kurulum Kılavuzu

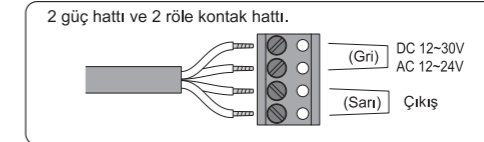
Kurulum esnasında güç beslemeyiniz. Cihazı demonte etmeyiniz veya değiştirmeyiniz, yangın veya elektrik çarpmasına neden olabilir.



4 Hassasiyet Ayarı



5 Elektrik Şeması

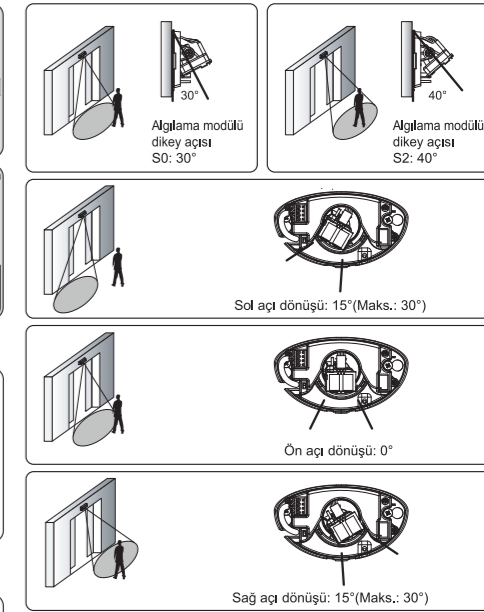


6 Montaj Bilgileri

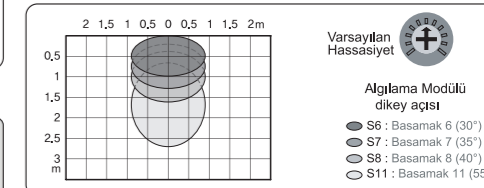


7 Algılama Alanı Pozisyon Ayarı

Kapıya yakın veya uzak bir algılama alanı elde etmek için Algılama modülünü yukarı ve aşağı doğru ayarlayınız. İstenen taraflı algılama alanına yaklaştırmak için Algılama modülünü sağa ve sola doğru ayarlayınız.



8 Algılama Alanı (Montaj Yüksekliği: 2,2m)



9 Hava Kapağı (Ayrıca Satılır)

