



DOORTL Microwave Touchless Switch Instruction Manual

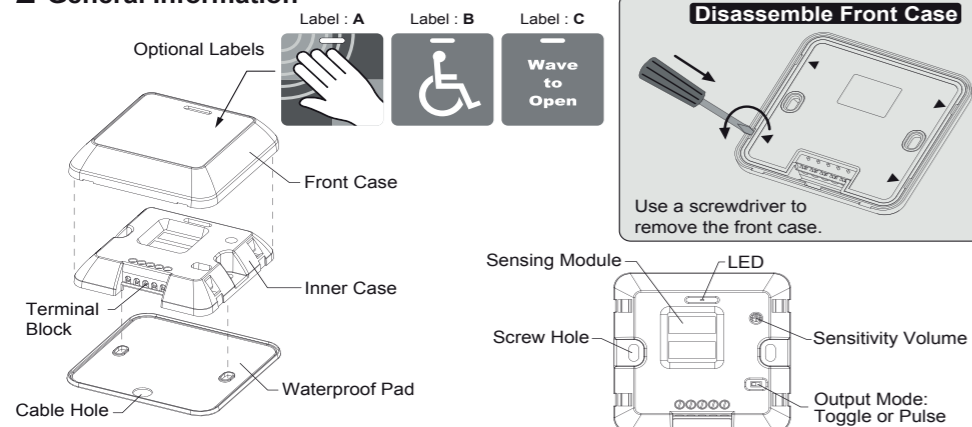
The DOORTL is a highly sensitive, high performance switch designed to activate automatic doors by detecting the movement of a person or object. For the safe and accurate use of this product, please read this instruction manual carefully.

1 Technical specifications

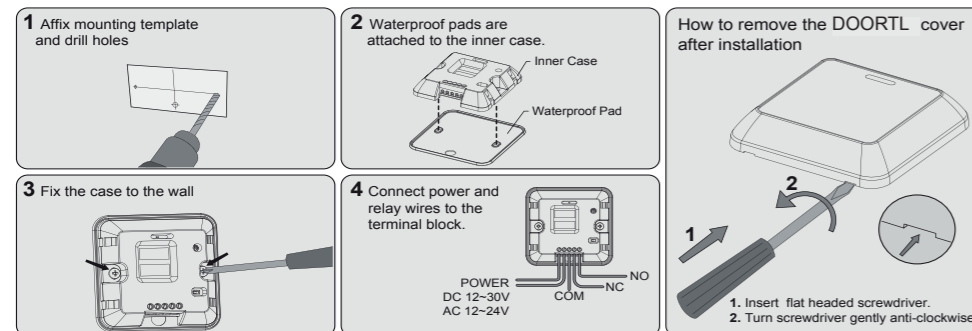
Technology : Microwave Motion Sensor
Microwave Module : 24.125GHz
Product Size : 85.9mm x 85.9mm x 20mm (W x L x H)
Detection Range [Hand] : ±5~40cm
Detection Mode : Motion (Bi-directional)
Speed of Target : Min. ±3cm/s, Max. ±1.5m/s

Power Supply : DC 12~30V, AC 12~24V
Current Consumption : < 1.4W
Output : Relay Contact (1A/24VDC)
Output Hold Time : 1.2Sec. (PULSE mode)
Operating Temp/Humidity : -20°C~+60°C/0~90%
International Protection : IP54

2 General Information

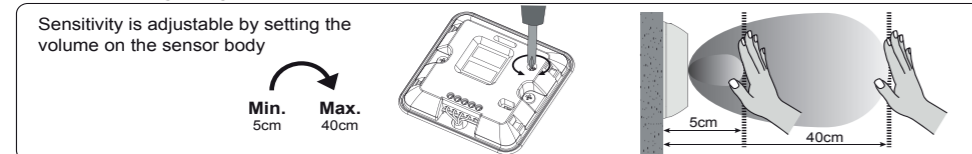


3 Installation Guide

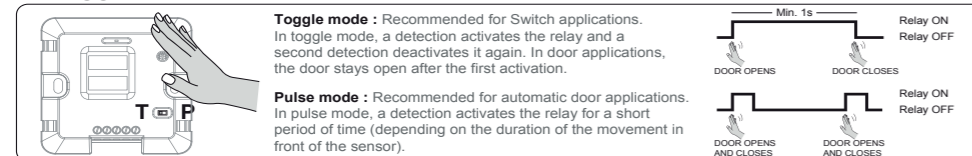


Caution
Do not supply power during installation.
Do not disassemble or modify the device, it may cause fire or electric shock

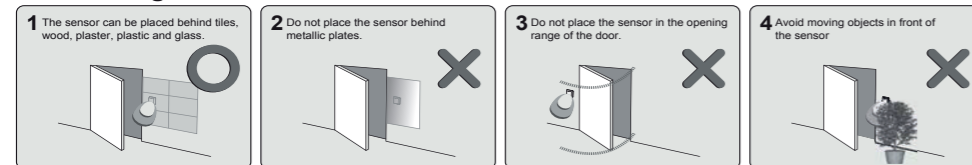
4 Sensitivity Adjustment



5 Toggle mode / Pulse mode



6 Mounting Information



DOORTL Interruttore senza contatto Microonde Manuale di istruzioni

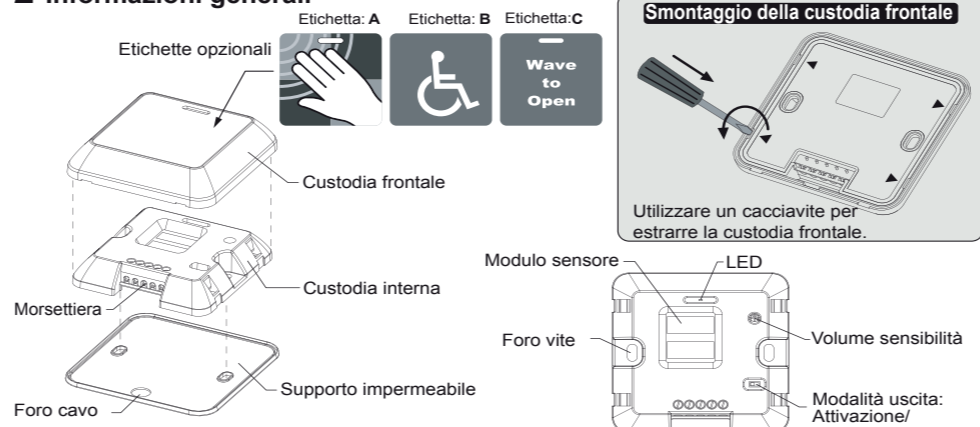
DOORTL è un interruttore altamente sensibile, ad elevate prestazioni, progettato per attivare le porte automatiche rilevando il movimento di una persona o di un oggetto. Per un uso sicuro e corretto del prodotto, si prega di leggere attentamente il presente manuale di istruzioni.

1 Specifiche tecniche

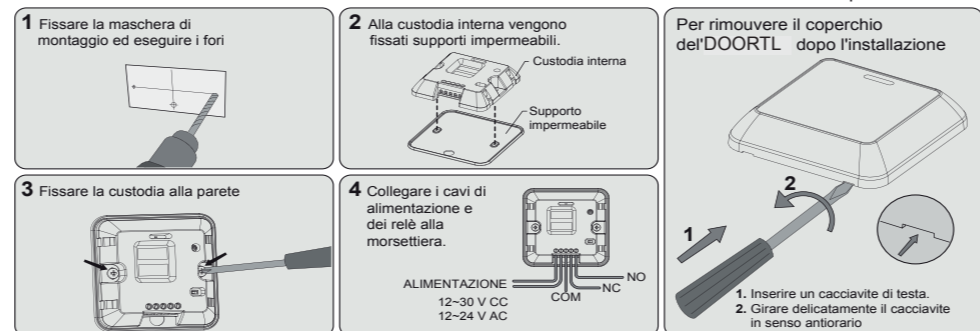
Tecnologia : Sensore di movimento microonde
Modulo microonde : 24,125 GHz
Dimensioni del : 85,9 mm x 85,9 mm x 20 mm (Larg. x Lung. x Alt.)
Campo di rilevamento [Mano] : ±5~40 cm
Modalità di rilevamento : Movimento (bidirezionale)
Velocità dell'oggetto : Min. ±3 cm/s, Max. ±1,5 m/s

Alimentazione elettrica : 12~30 V CC, 12~24 V CA
Consumo di potenza : < 1,4 W
Uscita : Contatto relé (1 A/24 V CC)
Tempo di mantenimento dell'uscita : 1,2 sec. (Modalità IMPULSI)
Temperatura/umidità di esercizio : -20°C~+60°C/0~90%
Protezione internazionale : IP54

2 Informazioni generali

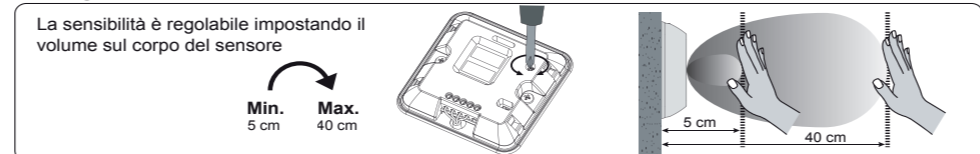


3 Guida all'installazione

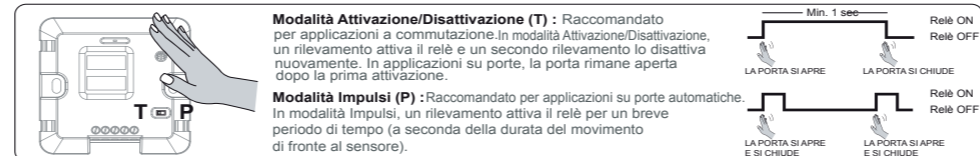


Attenzione
Non collegare all'alimentazione elettrica durante l'installazione.
Non smontare o modificare il dispositivo, potrebbe causare incendi o scariche elettriche

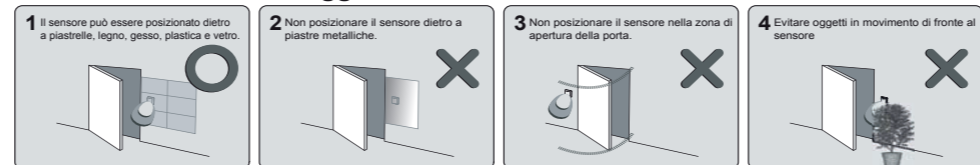
4 Regolazione della sensibilità



5 Modalità Attivazione/Disattivazione / Modalità Impulsi



6 Informazioni di montaggio



DOORTL Interrupor por microondas sin contacto Manual de instrucciones

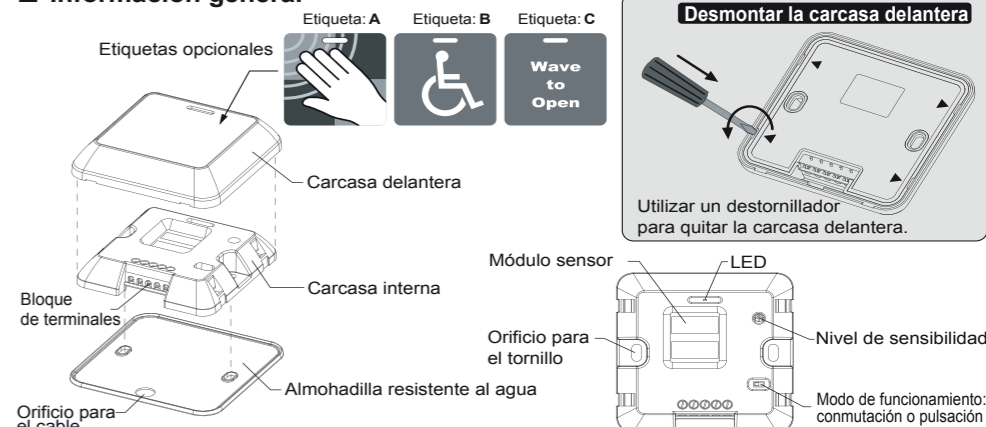
El DOORTL es un interruptor de gran sensibilidad y alto rendimiento diseñado para activar puertas automáticas mediante la detección de movimiento de una persona u objeto. Lea detenidamente este manual de instrucciones para utilizar el producto de manera correcta y segura.

1 Especificaciones técnicas

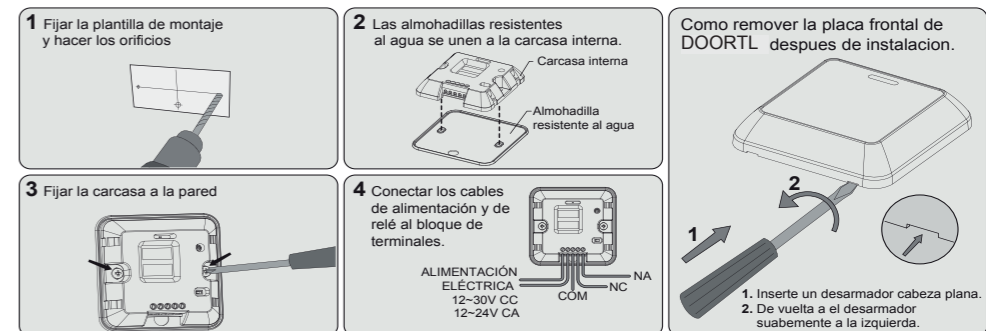
Tecnología : Sensor de movimiento por microondas
Módulo microondas : 24,125 GHz
Dimensiones del producto : (Ancho x Largo x Alto) 85,9 mm x 85,9 mm x 20 mm
Rango de detección [Mano] : ± 5~40 cm
Modo de detección : Movimiento (Bidireccional)
Velocidad del objetivo : Min. ±3 cm/s, Máx. ±1, m/s

Alimentación eléctrica : 12~30 V CC, 12~24 V CA
Consumo de energía : < 1,4 W
Salida : Contacto del relé (1A/24V CC)
Tiempo de retención de salida : 1,2 s (Modo de pulsación)
Temp./Humedad de funcionamiento : -20 °C~+60 °C/0~90%
Grado de protección : IP54

2 Información general

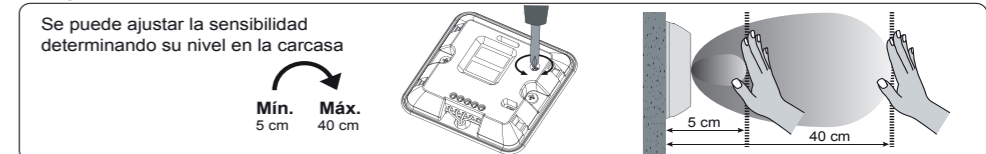


3 Guía de instalación

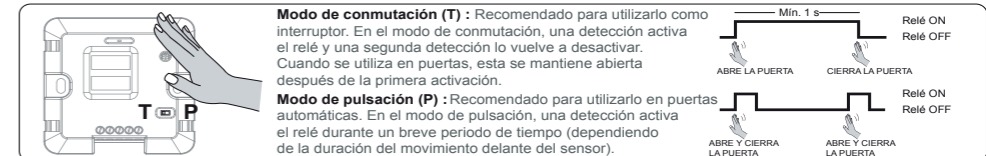


Precaución
Desconecte el suministro eléctrico durante la instalación.
No desmonte ni modifique el dispositivo, ya que podría incendiarse o provocar descargas eléctricas

4 Ajuste de sensibilidad



5 Modo de conmutación / Modo de pulsación



6 Información de montaje





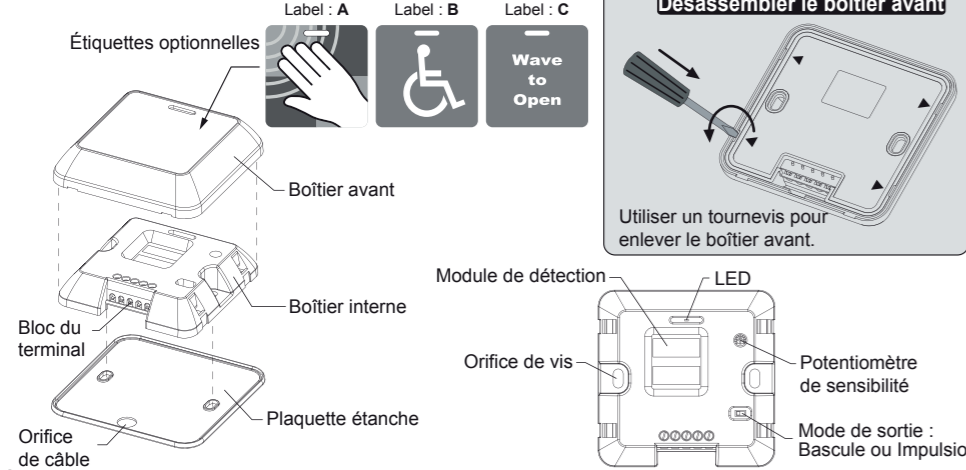
DOORTL Interrupteur Touchless Haute Fréquence Manuel d'utilisation

Le DOORTL est un interrupteur extrêmement sensible et performant conçu pour activer des portes automatiques en détectant le mouvement d'une personne ou d'un objet. Afin que ce produit fonctionne de façon sûre et correcte, veuillez lire ce manuel d'utilisation attentivement.

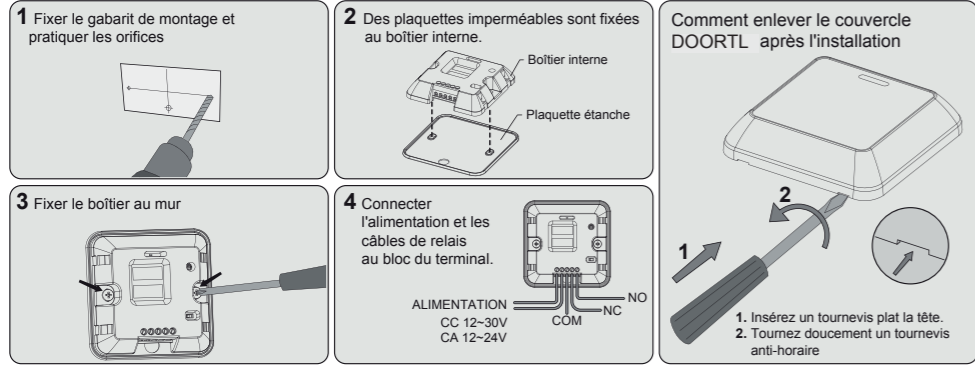
1 Spécifications techniques

Technologie : Détecteur de mouvement haute fréquence	Alimentation électrique : CC 12~30V, CA 12~24V
Module haute fréquence : 24.125GHz	Consommation électrique : < 1.4 W
Dimensions du produit : 85,9 mm x 85,9 mm x 20 mm (Largeur x Longueur x Hauteur)	Sortie : Contact relais (1A/24V CC)
Plage de détection Range [Main] : ±5~40 cm	Délai d'attente de sortie : 1,2 Sec. (Mode IMPULSION)
Mode de détection : Mouvement (Bi-directionnel)	Température / Humidité : -20°C/+60°C / 0~90%
Vitesse de la cible : Min. ±3 cm/s, Max. ±1,5 m/s	Protection internationale : IP54

2 Informations générales



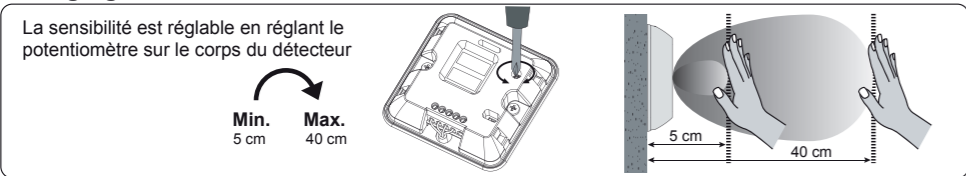
3 Guide d'installation



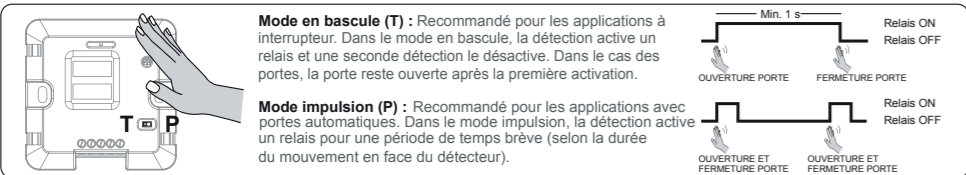
Attention

L'alimentation doit être éteinte durant l'installation. Ne pas démonter ou modifier l'appareil, cela peut entraîner un feu ou un choc électrique.

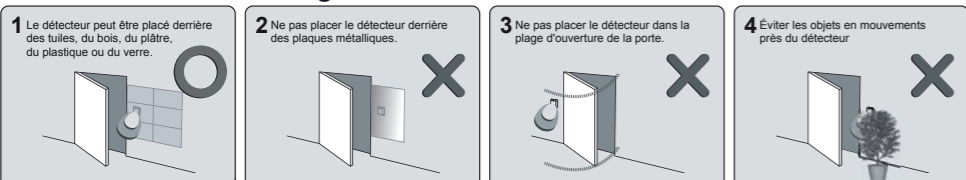
4 Réglage de la sensibilité



5 Mode bascule / Mode impulsion



6 Informations de montage



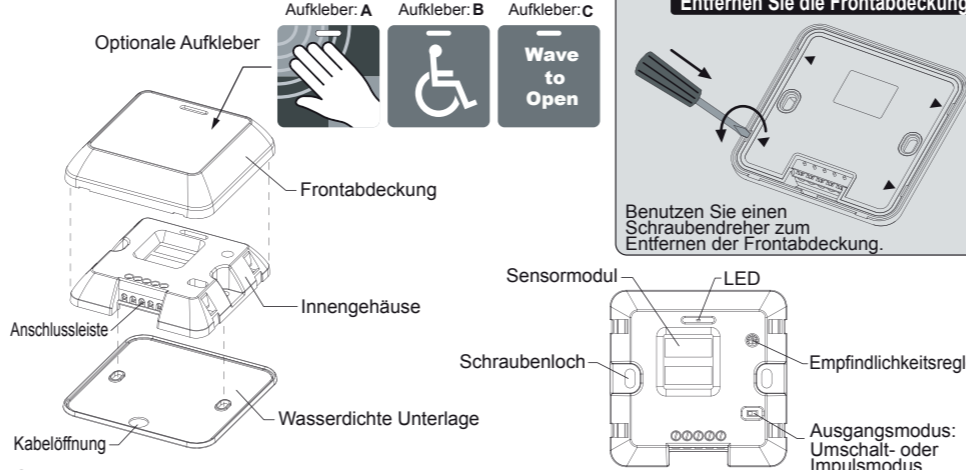
DOORTL Berührungsloser Mikrowellenschalter Betriebsanleitung

Der DOORTL ist ein hochempfindlicher, leistungsstarker Schalter zur Betätigung von Automattüren durch Erfassen der Bewegung von Personen oder Objekten. Lesen Sie bitte sorgfältig diese Betriebsanleitung, um einen sicheren und korrekten Gebrauch des Produktes zu gewährleisten.

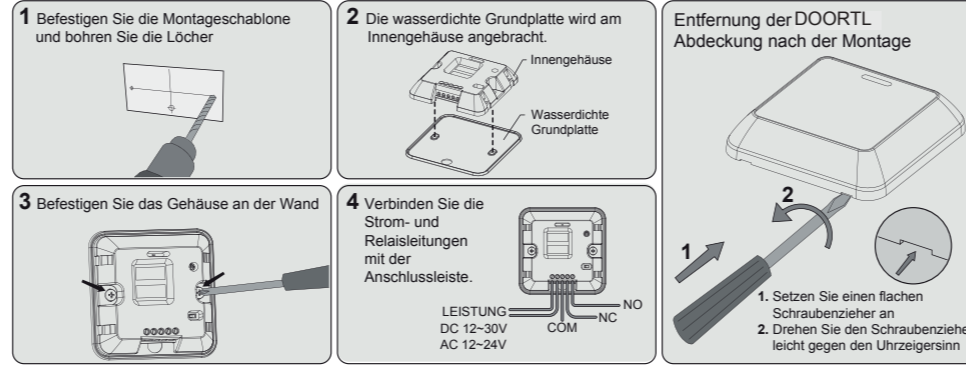
1 Technische Daten

Technologie : Mikrowellen-Bewegungssensor	Stromversorgung : DC 12~30V, AC 12~24V
Mikrowellenmodul : 24,125 GHz	Leistungsaufnahme : < 1,4 W
Produktabmessungen : 85,9mm x 85,9mm x 20mm (B x L x H)	Ausgang : Relaiskontakt (1A/24VDC)
Erfassungsreichweite [Hand] : ±5~40cm	Ausgangs-Haltezeit : 1,2 Sek. (Impulsmodus)
Erfassungsmodus : Bewegung (bidirektional)	Temp./Feuchtigk. Betrieb : -20°C/+60°C/0~90%
Geschwindigkeit Erfassungsziel : Min. ±3 cm/s, Max. ±1,5 m/s	Schutzklasse : IP54

2 Allgemeine Informationen



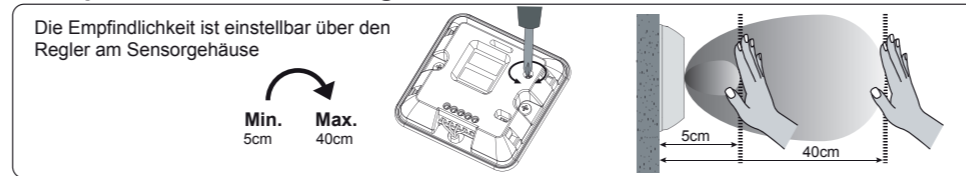
3 Installationsanleitung



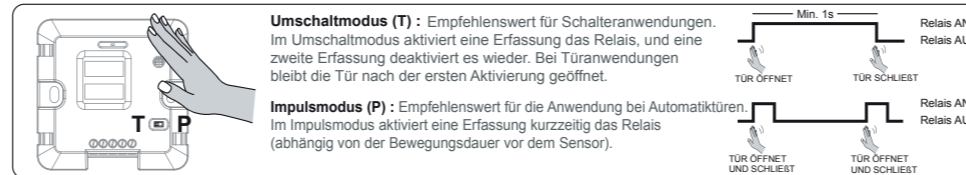
Achtung

Während der Montage darf kein Strom anliegen. Das Gerät darf nicht verändert oder zerlegt werden, da sonst Brand- oder Stromschlaggefahr besteht.

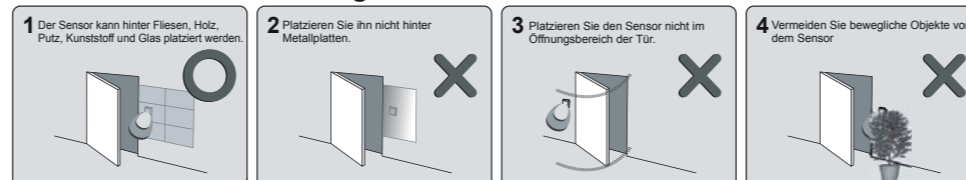
4 Empfindlichkeitseinstellung



5 Umschaltmodus / Impulsmodus



6 Informationen zur Montage



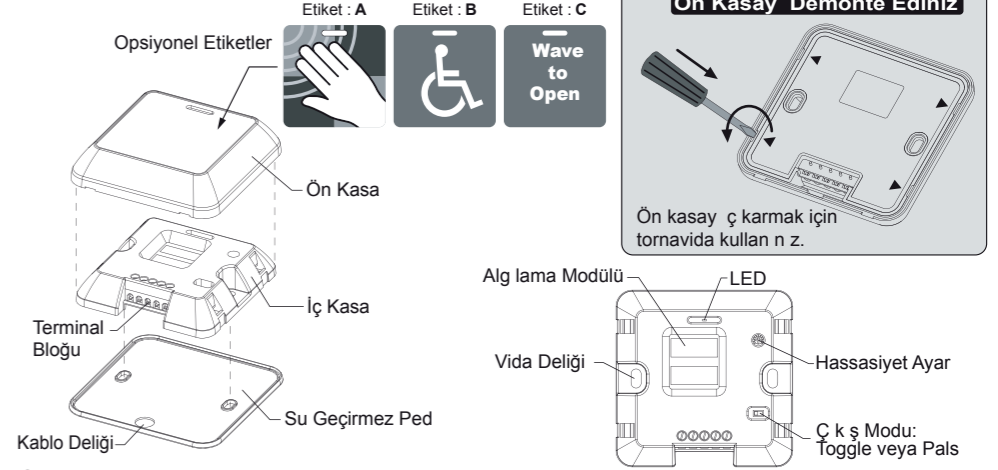
DOORTL Berührungsloser Mikrowellenschalter Betriebsanleitung

DOORTL, insan veya nesnelerin hareketini tespit ederek otomatik kap lar etkinleştirmek üzere tasarlanmış yüksek performanslı, çok hassas bir anahtardır. Ürünün güvenli ve doğru kullanımı için lütfen bu kullanma kılavuzunu dikkatli bir şekilde okuyunuz.

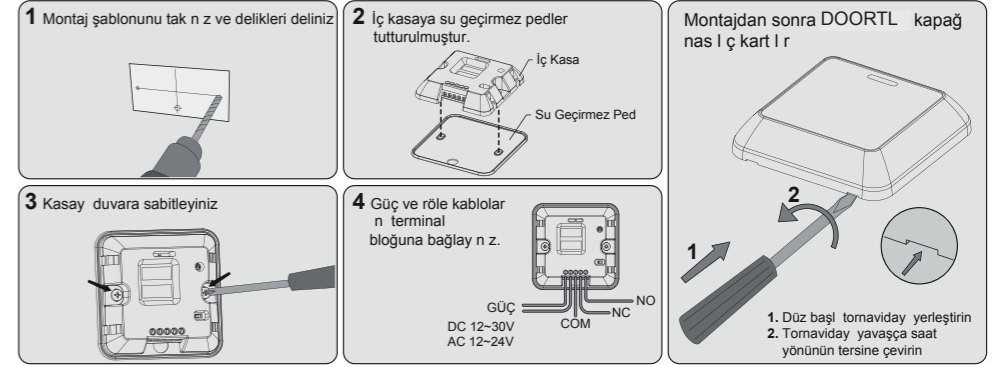
1 Teknik Özellikler

Teknoloji : Mikrodalga Hareket Sensörü	Güç Kaynağı : DC 12~30V, AC 12~24V
Mikrodalga Modülü : 24.125GHz	Akım Tüketimi : < 1.4W
Ürün Ebadı : 85,9mm x 85,9mm x 20mm (G x B x Y)	Çıkış : Röle Kontak (1A/24VDC)
Algılama Aralığı [El] : ±5~40cm	Çıkış Tutma Süresi : 1.2 Sn. (PALS modu)
Algılama Modu : H z (Çift yönlü)	Çalışma Sıcaklığı/Nem : -20°C/+60°C/0~90
Hedefin Hareketi : Min. ±3cm/sn, Maks. ±1,5m/sn	Uluslararası Koruma : IP54

2 Genel Bilgiler



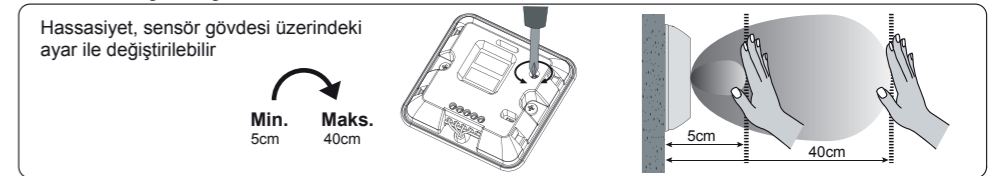
3 Kurulum Kılavuzu



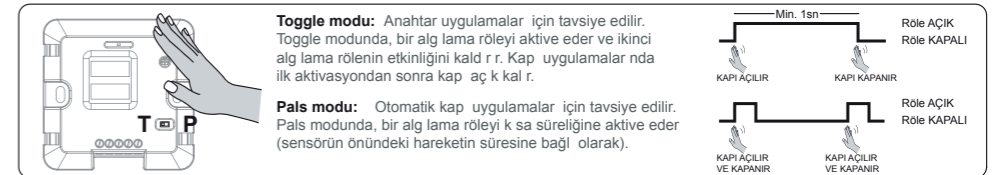
Dikkat

Kurulum esnasında güç beslemeyiniz. Cihazı demonte etmeyiniz veya değiştirmeyiniz, yangın veya elektrik çarpmasına neden olabilir.

4 Hassasiyet Ayar



5 Toggle modu / Pals modu



6 Montaj Bilgileri

